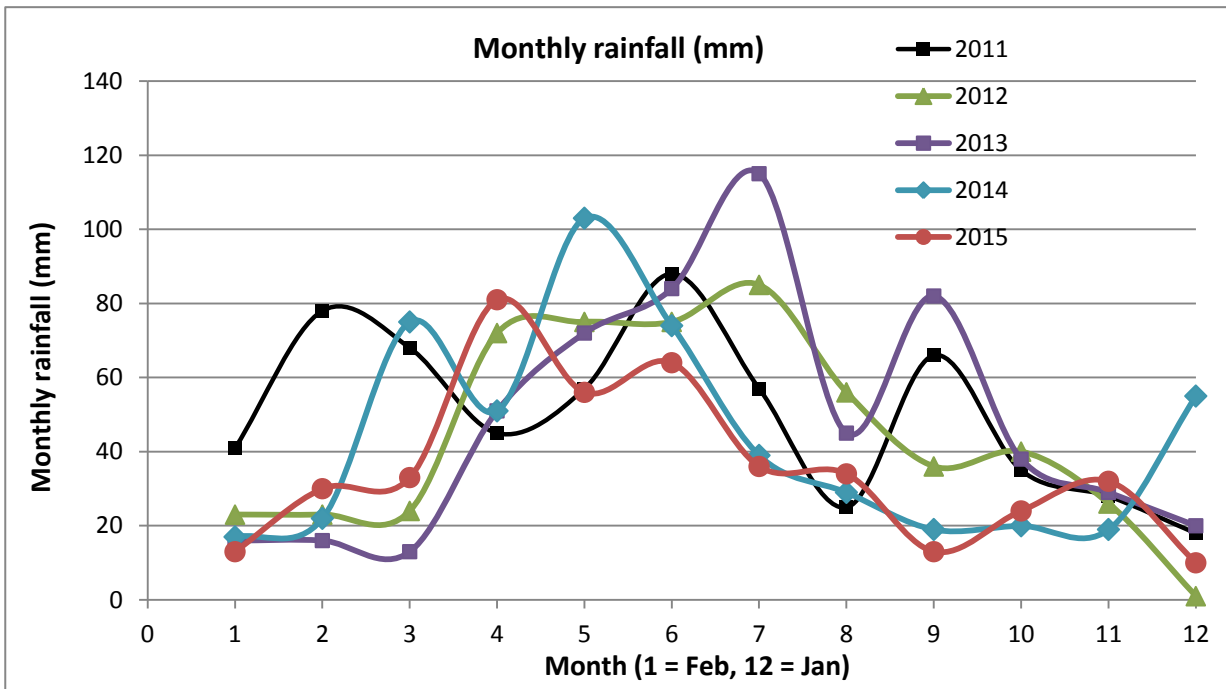


Environmental factors and Lake Hamilton's water and waterbird population

2012-2015

	Rainfall (mm)											
	Feb	Mar	Apr	May	Jun	Jul	Aug	Sep	Oct	Nov	Dec	Jan
2010	54	38	67	29	49	50	129	60	73	50	126	125
2011	41	78	68	45	57	88	57	25	66	35	28	18
2012	23	23	24	72	75	75	85	56	36	40	26	1
2013	16	16	13	51	72	84	115	45	82	38	29	20
2014	17	22	75	51	103	74	39	29	19	20	19	55
2015	13	30	33	81	56	64	36	34	13	24	32	10



	Water cover%											
	Feb	Mar	Apr	May	Jun	Jul	Aug	Sep	Oct	Nov	Dec	Jan
2012	85	80	80	90	100	100	100	100	95	80	85	75
2013	70	65	60	75	80	95	100	95	95	90	85	75
2014	75	70	70	75	95	95	100	100	100	90	80	70
2015	80	75	80	85	90	95	95	100	95	90	80	70

